

Surveyed for
SWD Well Permit

Has 325,000 Barrel Frac Pit

P.O.B.
FROM WHICH A 1/2" IRON PIPE
BEARS N12°49'15"E 5276.83'

(5.000 ACRES)
CAPROCK FIELD
SERVICES, LLC
1543/307 O.P.R.R.C.T.
NOT A PART

RIGHT OF WAY EASEMENT
STATE OF TEXAS
123/517 D.R.R.C.T.
RIGHT OF WAY EASEMENT
STATE OF TEXAS
123/518 D.R.R.C.T.

SECTION 44
BLOCK 5
H.&G.N. RR.
CO. SURVEY
A-5817

SECTION 10
BLOCK C9
P.S.L. SURVEY
A-5638

23.607 ACRES

11.034 ACRES

SOLD

22.768 ACRES

SOLD

15.001 ACRES

SOLD

9.638 ACRES

10.000 ACRES

15.478 ACRES

10.000 ACRES

10.000 ACRES

10.000 ACRES

10.000 ACRES

10.000 ACRES

10.000 ACRES

10.000 ACRES

10.000 ACRES

10.000 ACRES

SOLD

13.842 ACRES

15.000 ACRES

15.000 ACRES

15.000 ACRES

15.000 ACRES

18.048 ACRES

TRACT 2
SECTION 43, BLOCK 5
1438/781 O.P.R.R.C.T.

SECTION 43
BLOCK 5
H.&G.N. RR.
CO. SURVEY
A-442

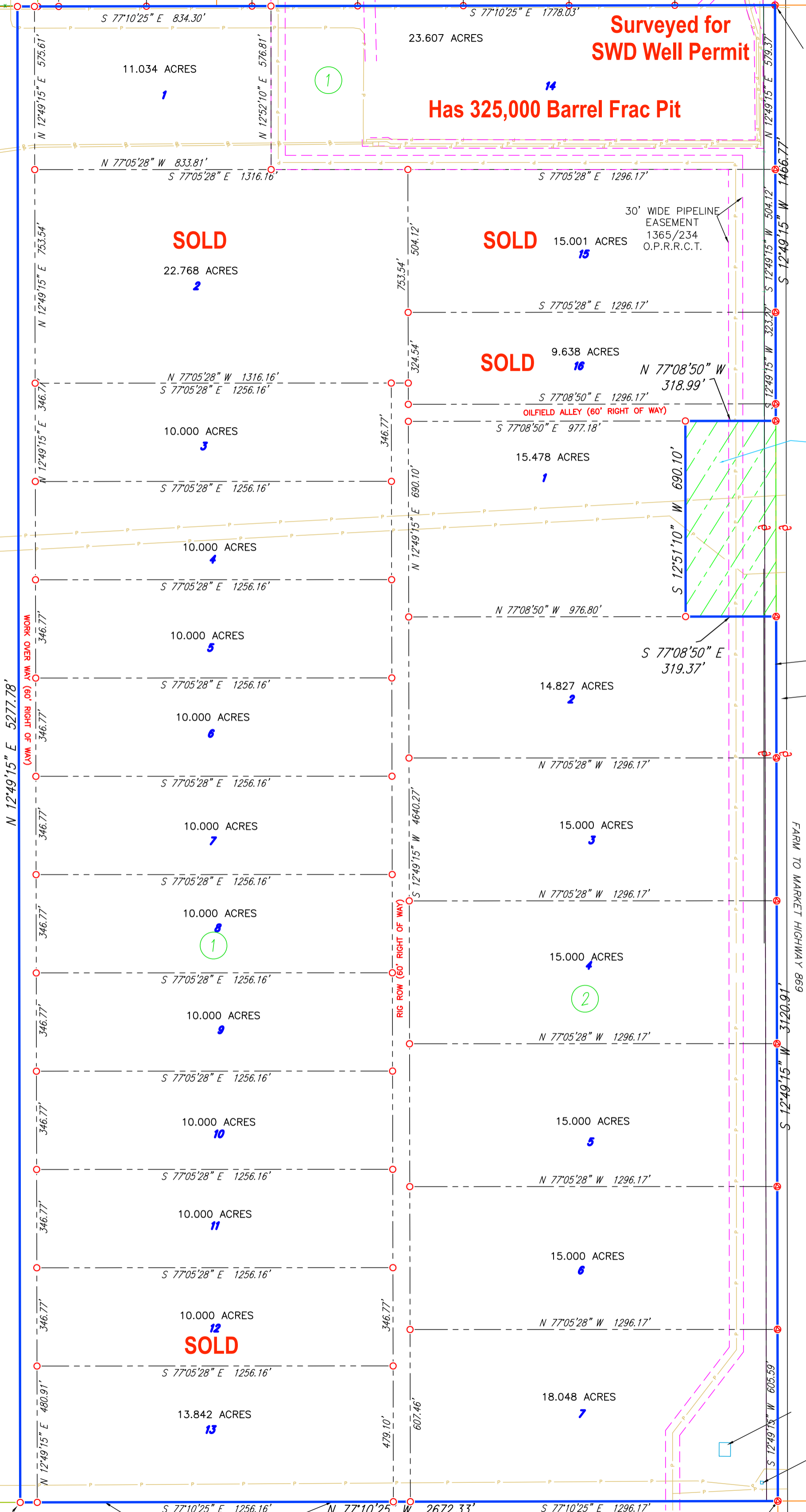


FROM WHICH A 1" SQUARE HEAD BOLT FOUND BEARS N77°10'25"W 2612.33'

SECTION 12
BLOCK C9
P.S.L. SURVEY
A-4875

SECTION 12
BLOCK C9
P.S.L. SURVEY
A-5729

FROM WHICH A RAILROAD SPIKE FOUND BEARS N57°19'33"W 5.88'



S 77°10'25" E 834.30'

S 77°10'25" E 1778.03'

N 12°49'15" E 5277.78'

WORK OVER (06) RIGHT OF WAY

RIG ROW (60' RIGHT OF WAY)

FARM TO MARKET HIGHWAY 869

CENTERLINE
COUNTY ROAD 211

TIN BUILDING
CONCRETE BUILDING